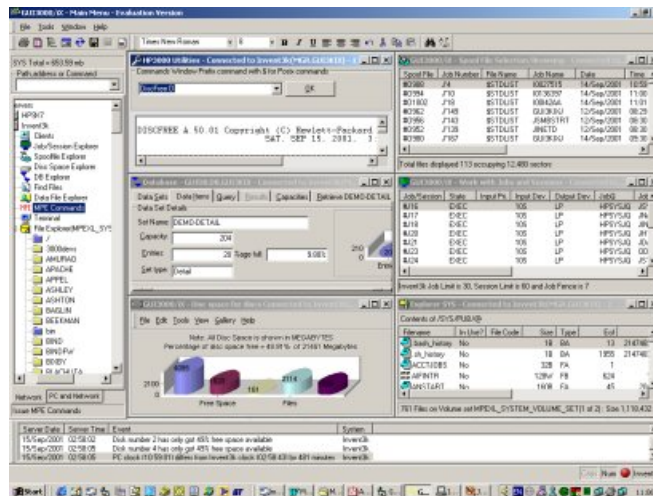


# GUI 3000/iX

## The Window on your HPe3000



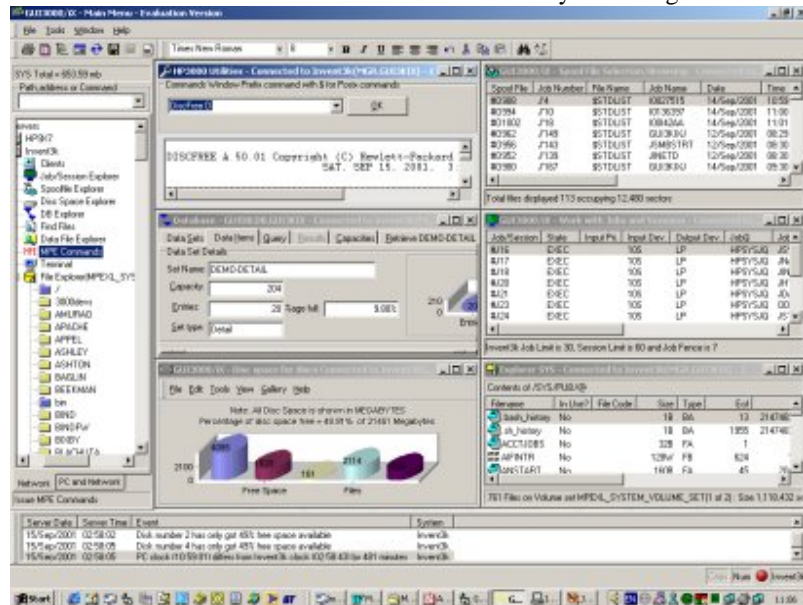
© GUI Innovations Limited, 2005



GUI3000 has been designed to be familiar to Windows Explorer users. The left hand window shows all the configured servers and the actions that can be carried out on those servers. The following screens are a 'walk through' of the product capabilities, but you can only experience the full power of GUI3000 by requesting an evaluation copy from our [distributors](#).

GUI3000 fully obeys MPE/iX security, and supports MPEX and Security/3000 from Vesoft

This is the main screen from GUI3000. The left hand view shows all your configured and connected servers.





# Table of Contents

<b>GUI3000/iX</b>	<b>8</b>
Welcome to GUI3000iX	8
<b>Setting up GUI3000/iX</b>	<b>9</b>
Setup Screen	9
Server Installation	10
Deployment	11
Foreign Language Considerations	11
<b>GUI3000/iX Main Constituents</b>	<b>12</b>
Servers Window	12
File Explorer	13
MPE/ix Utilities	14
Spool File Explorer	14
Disc Space Explorer	15
Data File Explorer	16
Working with Jobs and Sessions	16
Managing Devices	17
Console Logs	17
Managing User Properties	18
<b>GUI3000/iX Tool Bars</b>	<b>19</b>
ToolBars	19
<b>Managing Multiple Servers</b>	<b>19</b>
How to make your life easier	19
<b>GUI3000/iX and Unix</b>	<b>20</b>
<b>Exploring your Databases</b>	<b>20</b>
Database Explorer	20
Data Sets View	20
Query Database	20
Query Results	21
Graph Database	21
<b>Troubleshooting</b>	<b>21</b>
FAQ's	21
<b>Printing</b>	<b>22</b>
<b>External Products Supported</b>	<b>22</b>
External Product Links	22
Enabling VESOFT Products	23
Streamx	23
Security 3000	24
MPEX	24
Programmers Studio	25
Qedit For Windows	25
Adager	25
<b>Security</b>	<b>26</b>









# GUI3000/iX

## **Welcome to GUI3000/iX**



### **Introduction**

GUI3000/iX is a graphical front end to the HP3000 and Unix, which works in much the same as the 'Explorer' in Windows 95, Windows 98, Windows NT and Windows 2000.

GUI3000/iX can manage files, groups and accounts, in addition to providing information about your Turbo/Image databases, and providing an interface to the HP3000 and Unix for carrying out commands.

You can create and modify groups and accounts. Create new accounting structures with a few clicks of a mouse. Syntax errors are a thing of the past, as GUI3000/iX validates your input before submitting any commands to the HP3000.

View your files in any order you wish. Click on the title bar in file explorer to sort files in ascending or descending order of attributes. Purge, copy and rename groups of files at a stroke.

View, and manipulate Jobs and Sessions. Change Job and Session limits, JobQs. Allow jobs to run immediately. View processes and files being used by jobs and sessions.

View, manipulate and print Spool files. Mail spool files as text or as attached files. Save as Adobe PDF files and HTML files

Find files using parameters, and print, view them etc.

Monitor the health of your HP3000. Set up monitors for Disc Space, Job and Session limits, file and database fullness and FTP

Drag and Drop from your HP3000 servers to your UNIX servers, and vice-versa

Most importantly, you can 'merge' systems. This means you can control all your HP3000 servers from one PC. Control jobs, sessions, spool files, console logs and users all from one PC. Whenever you are connected to more than one server, GUI3000/iX automatically shows the

Show files from all connected systems? ☐

check box in the status bar of the appropriate screen. Simply tick the box, and GUI3000/iX will retrieve information from all connected systems, and will tell you the system the data has come from. Imagine being able to find all spoolfiles occupying more than 10,000 sectors on all systems. With GUI3000/iX you can do this with a couple of mouse clicks. Try it - you'll like it.

What's new in this version

The heart of GUI3000/iX is the 'servers' window, from here you can use the following functions:-

- Database Explorer - Inspect and Graph Image databases
- File Explorer - Inspect and Graph, files, groups, accounts and users
- Utilities - A command line interface for submitting HP3000 commands.
- Disc Space - A graphical view of your disc space
- Spool file Explorer - View, print and Delete spool files
- Find File - Find files on your HP3000
- Job and Session Explorer - Work with your jobs and sessions
- System Monitor - Monitor events on your systems
- Device File Manager - Generally manage devices.

Console Log Explorer - Examine console logs, log-ons and log-offs  
Unix File Explorer - Explore and copy files to your HP3000 servers  
Unix Commands - Issue UNIX commands

### Reference

How To  
Tool bars  
Security  
FAQ's

### Enhancements

If you have any enhancement requests for the product, please get in touch.

### Purchase

If this is an evaluation copy, and you wish to purchase the full product, please contact...

OmniSolutions Inc. Worldwide Excluding Europe, or Gainsborough Software for Europe

-0-

## Setting up GUI3000/iX

This is the initial setup screen. Use this screen to add, amend and delete server entries. The logon user and account fields are stored encrypted, and are not a security risk. The PC IP address is picked up automatically from your PC. For those users with DHP, this can be set to a unique number, as this is the way the server 'talks' back to the client.

See also Foreign Language Support

**GUI3000/iX - Set Up Screen**

Servers | Terminal/Editors | Misc. Settings | System Monitors

Application

Name:  PC IP Add:

Servers

Server Name	Serv...	Friendly Name	Server...
192.192.192.17	8281	HP3000 917	MPE/iX
192.192.192.50	8281	HP3000 922	MPE/iX
192.192.192.99	8281	Test Server	MPE/iX

☒ MPE/iX ☐ Unix

Server Name or IP:

Friendly Name:

Server Port:

☐ Autoconnect? ☐ Allow Op. Commands?

MPE/iX Logon

Session Name:  Session Pwd:

User Name:  User Password:

Account Name:  Account Password:

List of the servers you can currently connect to - Click to modify

-O-

## Server Installation

GUI3000/iX needs server installation, in addition to PC installation.

There are 4 options to install the server process.

### GUISIP.Exe

This is the default method started automatically after installing GUI3000/iX on the PC. This program can be re-run at any time to install the server programs.

This is the preferred method of server installation, as all the parameters and changes are automatically done on your behalf. Just answer the few questions posed, and your server programs will be installed.

### Reflection

Log on to the HP3000 as MANAGER.SYS. Click on the menu item SCRIPT and the RUN SCRIPT.

Change the script type to RCL, and enter the file name

c:\program files\gui3000ix\hp3000\guitrans.rcl

Click on Run, and the required files will be transferred to your HP3000.

The script will create the GUI3000/iX accounting structure, and copy the server files into the GUI3000/iX account

Modify the Files

### Minisoft

Log on to the HP3000 as MANAGER.SYS. Click on the menu item File and the RUN SCRIPT. Select the file name c:\program files\gui3000ix\hp3000\gui3000.s92

Click on open. Enter the directory name where you installed GUI3000/iX, click on OK, and the required files will be transferred to your HP3000.

The script will create the GUI3000/iX accounting structure, and copy the server files into the GUI3000/iX account

Modify the Files

### FTP

Edit the file c:\Program Files\Gui3000iX\hp3000\guiacct.ftp, changing the first line to your HP3000 server name, and the second line to your MANAGER.SYS log on, e.g. MANAGER/MANPASS.SYS/SYSPASS where MANPASS and SYSPASS are your passwords.

Save the file. Ensure the FTP job is running on your HP3000

(For MPE/iX 5.5 and earlier, this is usually the job file JFTPSTRT.ARPA.SYS, and is called FTPMON,FTP.SYS when you do a SHOWJOB

For MPE/iX 6.0 and later, please ensure that JINETD.NET.SYS is running the FTP service)

Run the MS DOS prompt.

Change your directory to: C:\Program Files\Gui3000ix\hp3000

Type in GUIACCT.BAT

This will run the 'Windows' FTP program, and copy the BUILDGUI file to the HP3000 using FTP.

Edit the file BUILDGUI.PUB.SYS, to enter the GUI3000 account and user passwords (if required), and STREAM BUILDGUI.PUB.SYS

This will build the GUI3000 accounting structure

Edit the file c:\Program Files\Gui3000ix\hp3000\guitrans.ftp, changing the first line to your HP3000 server name, and the second line to your MGR.GUI3000 log on, e.g. MGR.GUI3KIX and the third line to your passwords, e.g. MANPASS,GUIPASS

where MANPASS and GUIPASS are your passwords.

The password syntax for FTP is very important, or you will be unable to logon. The syntax for user and account passwords is:-

**userpass,accpass**

For just an account password, the syntax is

**accpass** or **,accpass**

For just a user password, the syntax is

**userpass**

An example is where the account password is "SERVER":-

**o 192.192.192.17**

**MGR.GUI3KIX**

**,SERVER**

Save the file. Ensure the FTP job is running on your HP3000 (see above). Run the MSDOS prompt. Change your directory to: C:\Program Files\Gui3000ix\hp3000

Type in GUITRANS.BAT

This will run the 'Windows' FTP program, and copy the GUI3000/ix server files file to the HP3000 using FTP.

Modify the Files

-O-

We have now made it easier to deploy GUI3000/iX  
In the setup screen, there are now 3 icons in the menu.



The steps for the deployment are as follows.

- 1) Setup GUI3000/iX how you want to operate it.
- 2) Export your settings to a file
- 3) Setup GUI3000/iX how you want your remote users to operate it.
- 4) Click on Export User settings for remote install
- 5) Click on Import Settings to restore your own settings

Your user settings are now stored in our Distrib.ini file.

Copy this file and GUISetup.exe to a shared directory

Either instruct your users to run GUISetup /S, or set up a batch file, install.bat containing GUISetup.exe /S

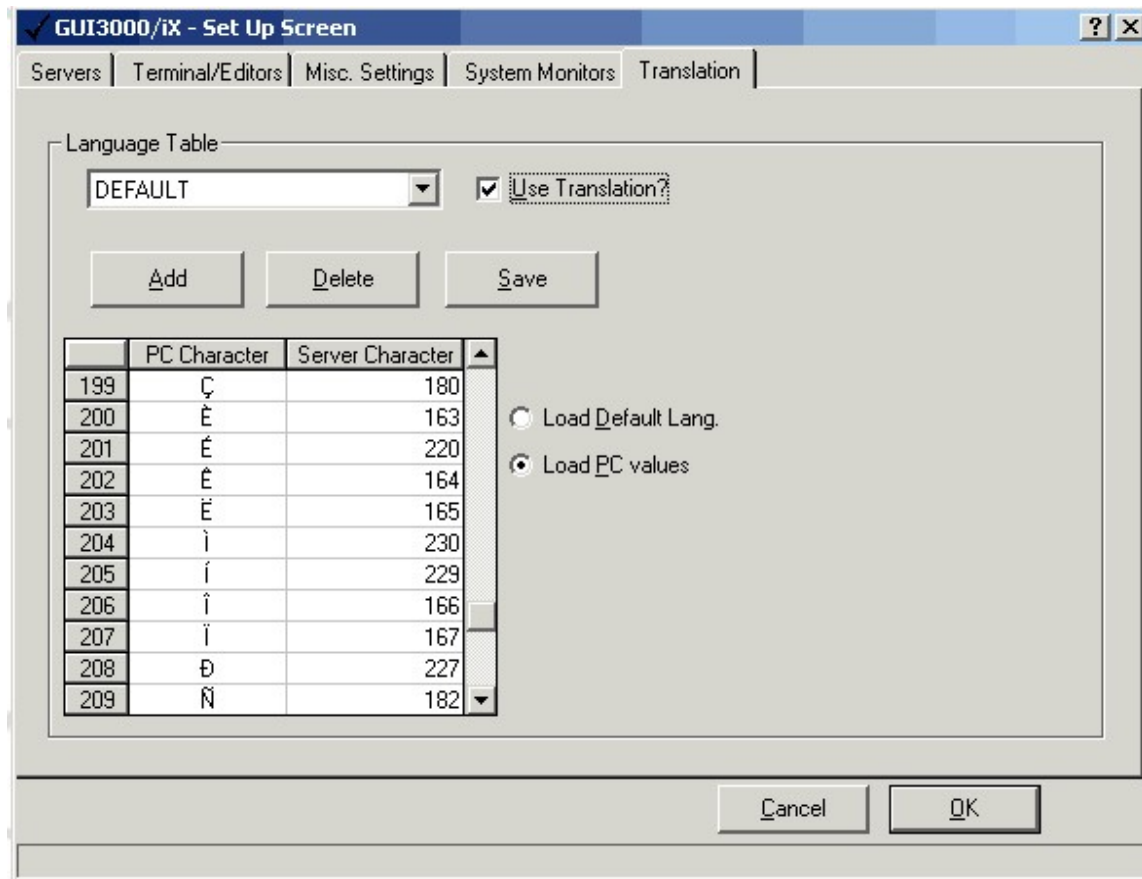
This will do a 'silent' install, and will use your desired settings. There is no need to set up each user individually, unless you want to.

It is possible to set up different groups of users. Just export the settings and put Distrib.ini with your setup program.

-O-

GUI3000/iX contains flexible user defined language support. A default translation table is supplied which will translate Roman-8 to Windows Ansi. This works transparently with GUI3000/iX downloaded files, but does not work for FTP files. The translation is only carried out if the option is checked.

Click on a hot-spot below for more information.



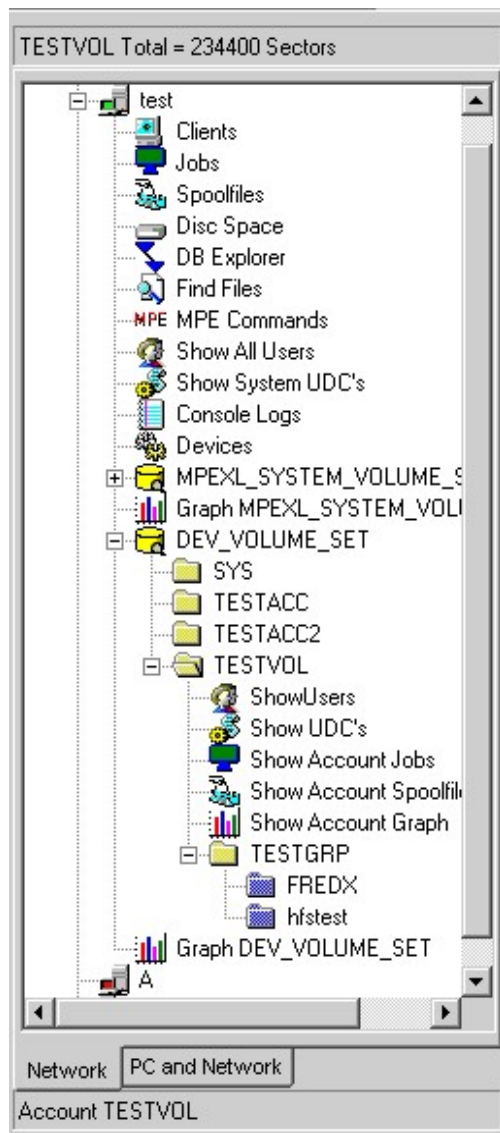
-0-

## GUI3000/iX Main Constituents

### **Servers**

This is the main control panel for GUI3000/iX. From here, you can connect to and control multiple servers, explore files, manage jobs, explore databases, and use GUI3000/iX to its full potential.

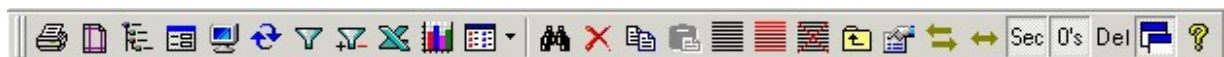
Click on a hot spot in the panel below, to get a description of each of GUI3000/iX's functions. See here for functions provided when you right-click on an item. Also see Drag and Drop for copying of files.



-O-

This window shows the files selected from the Group in the servers window. The files are selected according to the settings of the file filter. The files are displayed using a format similar to a LISTFILE,2.

The files are originally sorted in name order. To change the sort order, click on the heading of the column you wish to sort by. To reverse the sort order, click on the heading of the column again. This operation is carried out local to the PC, and does not place any load on the HP3000.



Explorer GUI3KIX - Connected to test(MANAGER.SYS) - 1

Contents of /GUI3KIX/PUB/@

Filename	In Use?	File Code	Size	Type	Eof	Limit	R/B	Sectors	# Extents	Max Extents
petetestdir/	No		16W	HBD	0	67107839	1	32	1	*
GUIMONOP	No		80B	FA	3	2000	16	256	1	*
GUIMONIT	No		80B	FA	4	2000	16	256	1	*
TESTBERT	No		120B	FA	10	10	2	16	1	1
TESTCUI	No		120B	FA	10	10	2	16	1	1
TES					10	10	2	16	1	1
TES					10	10	2	16	1	1
TES					11	12	2	16	1	1
TES					11	11	64	16	1	2
TES					15	15	2	16	1	1
GUI					20	2000	16	256	1	8
GUI					21	21	1	16	1	*
GUI					16	16	1	16	1	7
GUI					16	256	1	256	1	8
GUI					72	204800	1	256	1	8
GUI					87	87	1	96	1	*
GUI					88	88	1	96	1	*
GUI					88	88	1	96	1	*
GUI					105	100000	16	256	1	*
GUICNTRL	No	NMPRG	128W	FB	108	2000	1	112	1	8
CHECSCCB	No	EDTCT	80B	FA	124	124	64	48	1	3
GUIMPE	No	NMPRG	128W	FB	144	2000	1	144	1	8
GUISTORE	No	NMPRG	128W	FB	166	2000	1	176	1	8

32 Files on Volume set MPEXL\_SYSTEM\_VOLUME\_SET(1 of 2) : Size 8,416 sectors(2.05 Mb)

-O-

## MPE/ix Utilities

This screen contains a drop down list of HP3000 commands. Commands can also be typed in. If the command is new to the system, the command will be saved in the list. The output is shown in the window. Either key in the command, or choose the command from the drop down list. Then click on OK, and the command will be executed.

A history of the last 2000 commands is kept. To delete a command, select the command, right-click on the command, and select 'Delete'

**You cannot run programs from this screen, you need to use a terminal emulator**

GUI3000/iX supports many MPEX Commands. To issue an MPEX command, prefix your command with %.

GUI3000/iX supports many POSIX commands. To issue a POSIX command, prefix your command with \$.

-O-

## Spool File Explorer

The Spoolfile Explorer is the module that can make your life so much easier. Alter, delete, print, mail spool files, all with minimum use of the keyboard. You can now export to PDF and HTML, and GUI3000/iX obeys MPE/ix control characters.

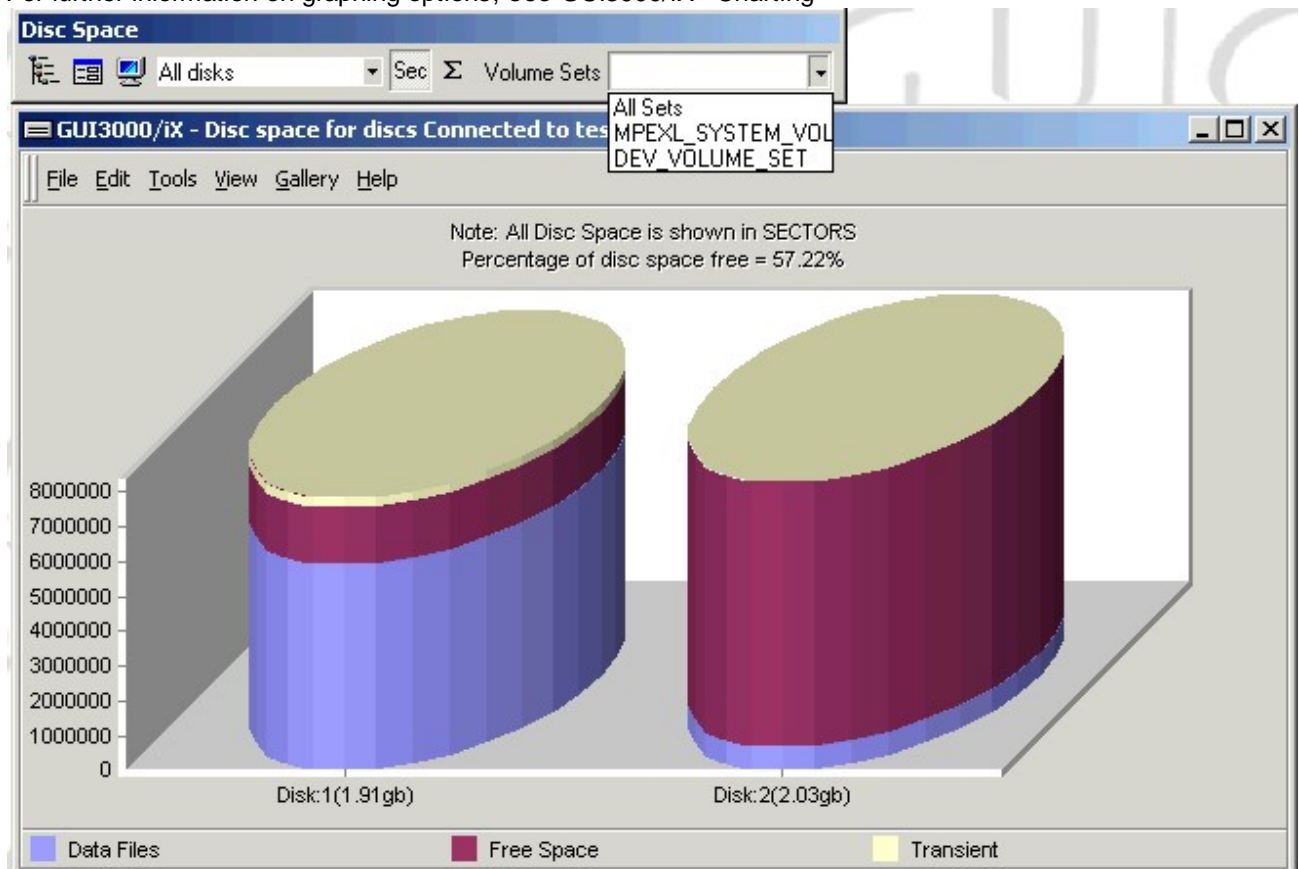


Spool File	Job Number	File Name	Job Name	Date	Time	Status	Records	Pages	Copies	Forms	Printer	Sectors	Priority	Owner
#0423	S'200	A	PETE	18/Mar/2000	18:26	READY	59	~1	1	F	LP	32	13	MG
#01	S'1	OFFLINE	PETE	09/Oct/1999	15:34	READY	1249	~21	1		LP	704	8	MA
#022	J'2	100SYCPH	100SYCPH	09/Oct/1999	15:52	READY	438	~8	1		LP	80	8	MA
#029	J'3	FTPCNFJ	FTPCNFJ	09/Oct/1999	17:40	READY	253	~5	1		LP	48	8	MA
#032	S'5	PETE	PETE	09/Oct/1999	19:08	READY	2180	~37	1		LP	624	8	MA
#030	J'4	JINETD	JINETD	09/Oct/1999	19:16	READY	46	~1	1		LP	16	8	MA
#035	S'2	PETE	PETE	09/Oct/1999	19:59	READY	6953	~116	1		LP	3312	8	MA
#036	J'1	STARIT	STARIT	09/Oct/1999	21:00	READY	19	~1	1		LP	16	8	MA
#038	J'1	STARIT	STARIT	09/Oct/1999	21:28	READY	18	~1	1		LP	16	8	MA
#039	J'1	STARIT	STARIT	10/Oct/1999	10:01	READY	18	~1	1		LP	16	8	MA
#040	J'2	STARIT	STARIT	10/Oct/1999	10:11	READY	50	~1	1		LP	16	8	MA
#041	J'1	STARIT	STARIT	10/Oct/1999	10:47	READY	18	~1	1		LP	16	8	MA
#042	J'2	STARIT	STARIT	10/Oct/1999	11:07	READY	18	~1	1		LP	16	8	MA
#043	J'3	STARIT	STARIT	10/Oct/1999	11:08	READY	18	~1	1		LP	16	8	MA
#044	J'4	STARIT	STARIT	10/Oct/1999	11:29	READY	19	~1	1		LP	16	8	MA
#046	J'1	STARIT	STARIT	10/Oct/1999	11:36	READY	19	~1	1		LP	16	8	MA
#047	J'1	STARIT	STARIT	10/Oct/1999	14:02	READY	18	~1	1		LP	16	8	MA
#048	J'2	STOPIT	STOPIT	10/Oct/1999	14:13	READY	18	~1	1		LP	16	8	MA
#049	J'3	STARIT	STARIT	10/Oct/1999	14:14	READY	18	~1	1		LP	16	8	MA
#050	J'4	\$STDLIST	STOPIT	10/Oct/1999	14:19	READY	18	~1	1		LP	16	8	MA
#051	J'5	\$STDLIST	CONFJOB	10/Oct/1999	14:20	READY	82	~2	1		LP	16	8	MA
#052	J'6	\$STDLIST	STARIT	10/Oct/1999	14:20	READY	18	~1	1		LP	16	8	MA

-0-

## Disc Space Explorer

For further information on graphing options, see GUI3000/iX - Charting



-0-

The data file explorer allows you to retrieve data from KSAM files and serial files on your HPe3000. Data definitions are saved on the server, so they are accessible to all users. The database is GUIFIL and is built



on installation, by GUILOADJ. If your database has not been built, simply stream GUILOADJ to build the data definitions database.

Click on a hot-spot for more details.

File Layout | Retrieve Data | Results

Choose or add a file  
File Name: /SOCKETS/V40/GUIKSAM  
Buttons: Add File, Save, Save As, Delete

Test for NM Ksam - Record len 48 bytes (NM Ksam)

Data File Details

Field Name: F8  
Field Type: Integer (dropdown menu open)  
Length: 4  
Start At: 1  
KSAM Key? ☐  
Ok

	Field Name	Field Type	Field Length	Starts At	Ends At	Key
1	F1	Integer	20	1	20	✓
2	F2	Integer	4	21	24	✓
3	F3	Integer	2	25	26	✓
4	F4	Integer	4	27	30	✓
5	F5	Long Integer	8	31	38	✓
6	F6	Packed	6	39	44	✓
7	F7	Character	4	45	48	✓

-O-

## Job and Sessions Explorer

GUI3000/iX makes controlling your jobs and sessions, even on multiple CPU's simple. In addition to the MPE/iX's SHOWJOB information, you see the IP Address of the PC Client (if applicable), the elapsed time of the job and session, and the CPU seconds used. Click on a menu 'hot spot' for more details.

You can also filter job and session information. See Filtering for more details

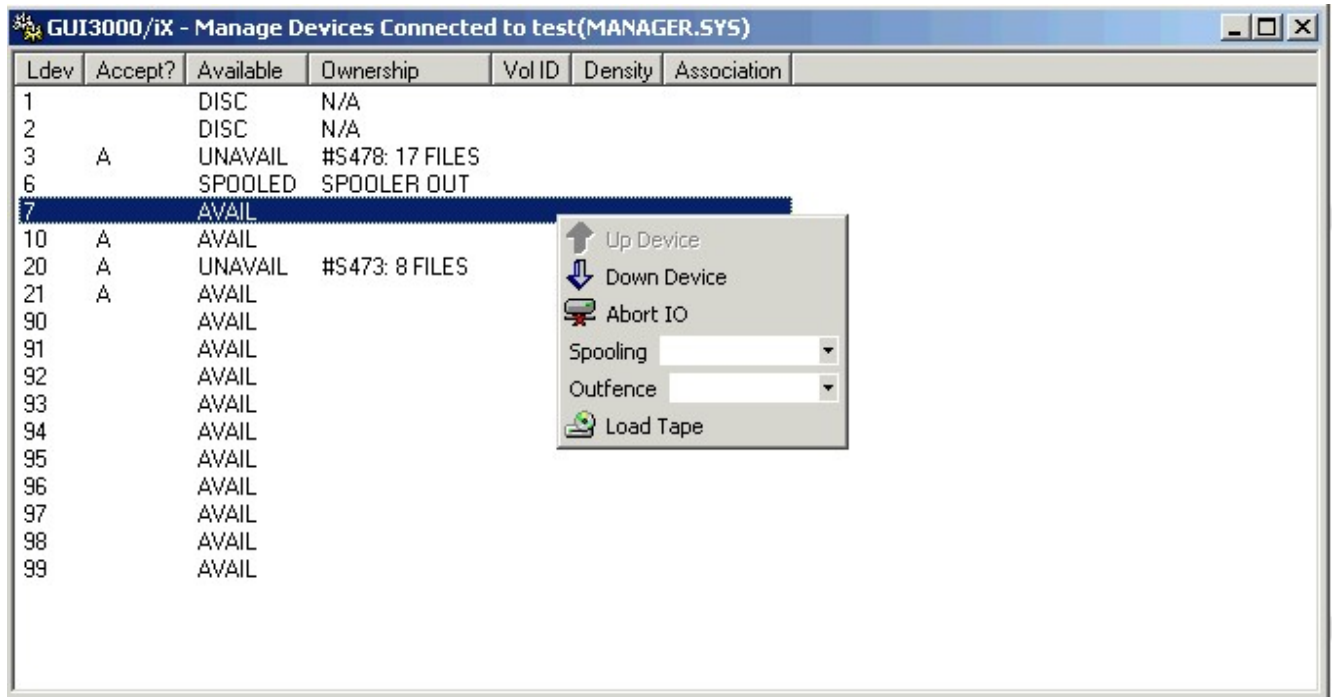
GUI3000/iX - Work with Jobs and Sessions - Connected to test(MANAGER.SYS) - 1

Job/Session	State	Input Pri	Input Dev	Output Dev	JobQ	Job/Session Name	Introduced	IP Address	Elapsed Time	CPU Secs	Host
#S473	EXEC	20	20			OPERATOR.SYS	TUE 7:08P		2:12:28	0.187	test
#J633	EXEC	105	LP		HPSYSJQ	JINETD.MANAGER.SYS	TUE 7:09P		2:11:28	7.681	test
#J634	EXEC	105	LP		HPSYSJQ	WTRSH.MGR.WHISPER	TUE 7:09P		2:11:28	2.464	test
#S478	EXEC	3	3			PETE.MGR.GUI3KIX	TUE 9:07P	192.192.192.46	0:13:28	18.938	test

Job Limit is 3, Session Limit is 20 and Job Fence is 7

-O-

This screen allows you to manage the various devices on your HP3000. Click on a hot spot for more details.



-0-

Console Log Explorer allows you to display console logs from all your connected systems. You can filter dates, times, and just show log on and log off records. Due to the way system log file records are written, you may not get exactly what is displayed on the console. The only way to do this is to 'Switchlog' prior to scanning the records. The default filter when entering this screen is to show the last hour. User defined events are also supported



GUI3000/iX - Console Logs - Connected to test(MANAGER.SYS) - 1					
Job/Sess	Date	Time	In/Out	Console Message	
#S474	18/Jul/2000	20:35	Out	20:35/#S474/74/Pete Vickers	Connected as PETE ,MGR.GUI
#S474	18/Jul/2000	20:35	Out	20:35/#S474/74/3000	
SYSTEM	18/Jul/2000	20:42	In	ABORTJOB #S475	
#S475	18/Jul/2000	20:42	Out	20:42/#S475/64/LOGOFF ON LDEV #4.	
#J633	18/Jul/2000	20:42	Out	20:42/#J633/23/FROM/MGR.SAMBA/tcon on IPC\$ by MGR.SAMBA from pentium	
#S476	18/Jul/2000	20:42	Out	20:42/#S476/69/LOGOFF ON LDEV #5.	
#J633	18/Jul/2000	20:43	Out	20:43/#J633/74/FROM/MGR.SAMBA/tdis on IPC\$ by MGR.SAMBA from pentium	
SYSTEM	18/Jul/2000	20:44	Out	** NS/3000 NetIPC ERROR IN VT; Job: 0; PIN: 72; Info: 1	
SYSTEM	18/Jul/2000	20:44	Out	- Error: 42;	
#S477	18/Jul/2000	20:44	Out	20:44/#S477/69/(PROGRAMMATIC) LOGON FOR: "MGR.SOCKETS.V40" ON LD	
SYSTEM	18/Jul/2000	20:47	Out	** NS/3000 NetIPC ERROR IN VT; Job: #S474; PIN: 22; Info: 1	
SYSTEM	18/Jul/2000	20:47	Out	- Error: 42;	
#S474	18/Jul/2000	20:47	Out	20:47/#S474/48/LOGOFF ON LDEV #3.	
#S478	18/Jul/2000	21:07	Out	21:07/#S478/48/LOGON FOR: "PETE.MGR.GUI3KIX,PUB" ON LDEV #3.	
SYSTEM	18/Jul/2000	21:11	In	ABORTJOB #S477	
#S477	18/Jul/2000	21:11	Out	21:11/#S477/69/LOGOFF ON LDEV #4.	
#S478	18/Jul/2000	21:12	Out	21:12/#S478/74/Pete Vickers	Connected as MANAGER.SYS

17 log events displayed

-O-

This screen allows you to view and amend user details, either individually, or by multiple selections. The 'summary' line

shows any anomalies (such as users with no home groups), and the number of users with System Manager capability.

You can also filter users by capability, e.g. find all users with PH capability

GUI3000/iX - Users Details Connected to test(MANAGER.SYS)							
User Name	Home Group	Account	Password	User Capabilities	Max Pri	Logon Ct.	Locattr
MGR	PUB	ARC		AM,NM,CS,ND,SF,BA,IA,MR,DS,PH	CS	0	00000000
MGR	PUB	BIND		AL,ND,SF,BA,IA,PM,PH	CS	0	00000000
MGR	PUB	CONV		AM,ND,SF,BA,IA,PH	CS	0	00000000
CREATOR	DBASE	CSNET		ND,SF,BA,IA	CS	0	00000000
DEV	DBASE	CSNET		ND,SF,BA,IA	CS	0	00000000
MGR	PUB	CSNET		AM,ND,SF,BA,IA,MR,DS,PH	CS	0	00000000
MGR	PUB	DISC		AM,ND,SF,BA,IA,PM,PH	CS	0	00000000
COBDEV		GFUSA		ND,SF,BA,IA	CS	0	00000000
CREATOR	DBASE	GFUSA		ND,SF,BA,IA	CS	0	00000000
JOB		GFUSA		ND,SF,BA,IA	CS	0	00000000
MANAGER	PUB	GFUSA		AM,ND,SF,BA,IA,MR,DS,PH	CS	0	00000000
PHDEV		GFUSA		ND,SF,BA,IA	CS	0	00000000
QUSER		GFUSA		ND,SF,BA,IA	CS	0	00000000
TC	PUB	GFUSA	TC	ND,SF,BA,IA	CS	0	00000000
GRDEV		GRDEV		ND,SF,BA,IA	CS	0	00000000
MGR	PUB	GRDEV		AM,AL,GL,ND,SF,BA,IA	CS	0	00000000
PPLDEV		GRDEV		ND,SF,BA,IA	CS	0	00000000
DEMO	PUB	GUI3000		AM,GL,OP,ND,SF,BA,IA,PM,MR,PH	CS	0	00000000
DEMO1	PUB	GUI3000		AM,GL,OP,ND,SF,BA,IA,PM,PH	CS	0	00000000
DEMO2	INSTALL	GUI3000		AM,GL,OP,ND,SF,BA,IA,PM,PH	CS	0	00000000
MGR	PUB	GUI3000		AM,GL,OP,ND,SF,BA,IA,PM,PH	CS	0	00000000
MGR	PUB	GUI30001		AM,AL,GL,ND,SF,BA,IA,PM,MR,DS,PH	CS	0	00000000


There are 28 users with no home group,109 users with no passwords and 5 users with System Manager access

-O-

## GUI3000/iX Tool Bars

## ToolBars

All the Tool bars and Menus in GUI3000/iX can be detached, and float on the screen, or docked at the top, either side of the screen or the bottom of the screen

Simply click on the  hold the mouse key down, and drag and drop the tool bar or menu

Jobs and Sessions Tool bar



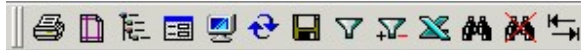
Spool File Explorer Tool bar



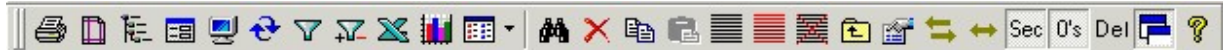
Database Explorer Tool bar



Console Explorer Tool bar



File Explorer Tool bar



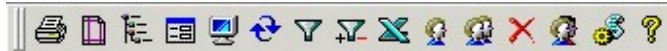
File Editor Menu



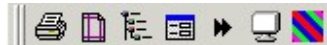
File View Menu



Users Menu



Telnet Menu



-O-

## Managing Multiple Servers

GUI3000/iX allows you to control and manage multiple servers with unprecedented ease. You can manage and filter jobs and sessions, spool files, console logs and automatically monitor all connected systems easily.

GUI3000/iX monitors all connected HP3000's automatically. When you configure the monitor (see Setup for details), all your monitored events from **all connected HP3000 servers**. This allows you to see when disc space is getting low, spot CPU hogs, spot long job queues and files or database approaching their limit, with no effort on your part, except for setting up the monitors. See 'Working with System Monitor'.

Job and Session Explorer, Spool File Explorer and Console Log Explorer, all contain a checkbox in the status bar, when they are connected to multiple HP3000's.

Show files from all connected systems? ☐

Simply check this box, click on refresh, and data is returned from all your systems. If your spool files are getting out of control, simply set up a filter for all spool files, created before a certain date, containing more than a certain number of pages, and then select them, and delete them at a stroke. GUI3000/iX's powerful filtering, and multiple system connection make these tasks so easy.

-O-

## GUI3000/iX and Unix

### Exploring your Databases

This is the initial screen of the Database Explorer, showing all the data sets you have access to in your chosen database. Click on a hot spot, to discover how Database Explorer can help you.



-O-

#### **Data Item Explorer**

This screen allows you to get details on your data sets. Double click on a field name to find out where else it is used in this database. Double click on that data set to go to it. See the links for your masters and details. Instant graphical information on your datasets, including DDX Capacities.

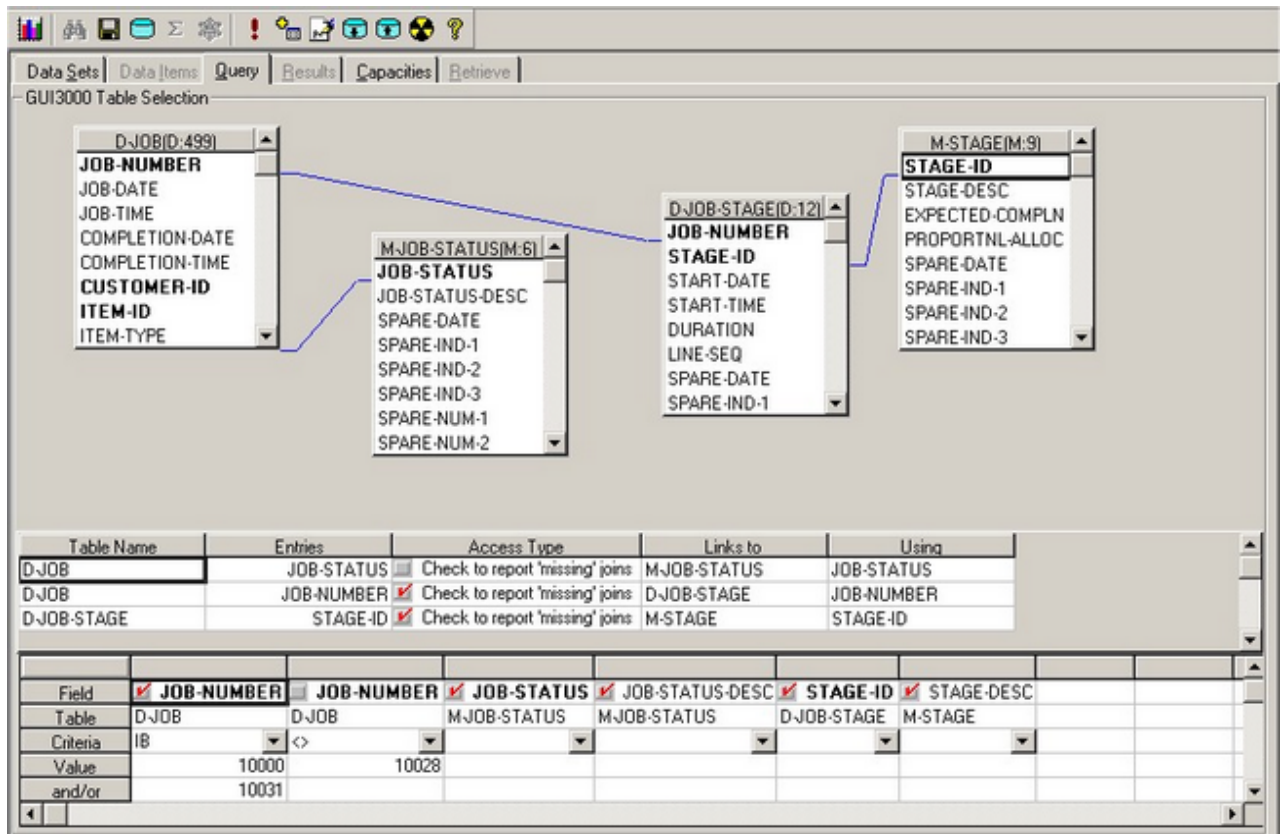


-O-

#### **Query**

The database query allows you to link data sets together, and report from them. You can also export the results directly to Microsoft Excel, or to CSB files. Click on a 'hot spot' to get more information.





-O-

Shows the results of any Query. Click on a column heading to sort the data. Click again to reverse the sort. Click 'Freeze' on the toolbar to freeze columns. Click 'Autosum' to automatically sum any numeric fields highlighted.



```
{bmc DB4.SHG}
```

-O-

GUI3000/iX can give you a graphical view of your datasets, their number of entries, and their capacities. Simply click on the 'Graph' icon on the toolbar. Graphing Options

-O-

## Troubleshooting

### I Can't.....

**Below are listed the most Frequently Asked Questions about GUI3000/iX**

..... **I can't see all my accounts**

- 1) Set the options in explorer to 'Show Zeros'

**I can't move files or copy files across accounts**

Ensure you are logged on with System Manager capability

**I can't create new accounts or groups**

Ensure you are logged on with System Manager capability

**I can't see the creator of a file, or when it was last accessed**

Try using a filter. Creation date > 01/Jan/1901 will show you all files, with creator, and all dates

**I can't see all files in an account or group**

Ensure a file filter is not in effect. Top status bar on explorer contains filter box if a filter is in effect

**I can't run a program from the Commands window**

GUI3000/iX is not a terminal emulator. Only MPE/iX (and MPEX) commands can be run from the commands window. Try starting a session from the 'Sessions' icon, or double-click on a program file.

**I can't delete a command from the commands window.**

Click on setup, highlight the command, and delete it

Setup Screen

**I can't use Security 3000**

Ensure Security 3000 is correctly configured for use with GUI3000

-O-

## Printing

## External Products Supported

GUI3000/iX contains links to work with the following products. Thanks go to Jamie Dixon and Greg Sharp from Whispertech, David Greer from Robelle, and Rene Woch from Adager for their help during development.

Programmers Studio from Whispertech.

If you use P.S., you can use GUI3000/iX to send your files to the editor. Simply right-click on a file, and select Send To, Programmers Studio. GUI3000/iX supports one-off file editing, and Programmers Studio projects. See Setup for more details on configuration.

Qedit from Robelle

If you use Qedit for Windows, you can use GUI3000/iX to send your files to the editor. Simply right-click on a file, and select Send To, Qedit. See Setup for more details on configuration, and Qedit notes for some further configuration information.

**Adager** from Adager

If you use Adager to manage your databases, GUI3000/iX detects this, and allows you to graphically manage your database capacities. See DB Explorer Capacities for more Details.

MPEX, Security/3000 and Streamx from VESOF.

GUI3000/iX fully supports Security/3000, and has built in extensions to take advantage of the enhanced facilities used by MPEX. GUI3000/iX recognises Streamx prompts at the beginning of a job, but cannot accept parameter prompts. To make things easier when streaming such a file, highlight the file, right click and Send To Telnet for Stream. See Enabling VESOF products and Security 3000 problems for more details.

### Reflection from WRQ and Minisoft Terminal Emulators

When you double click on a program you can run it in our own simple terminal emulator, or use Reflection or MS92. Please see Setup for more details.

LZW from Telamon.

GUI3000/iX now supports the popular LZW zip format, and allows you to zip, unzip and list from LZW files. The terms of the licence prohibit us from shipping LZW on the cd, but it can be obtained directly from Telamon by clicking on the link.

-O-

### Enabling VESOF Products

In order for VESOF products to function correctly, GUI3000/iX needs some variables setting in your GUI3KIXJ Job

These are as follows:-

```
!COMMENT *****
!COMMENT * If you have MPEX on your system, change
!COMMENT * File equation below to:-
!COMMENT * FILE MPEX=MPEX.ggg.aaa
!COMMENT * where ggg is the MPEX group (usually PUB)
!COMMENT * and aaa is the MPEX account (usually VESOF)
!COMMENT * *****
!FILE MPEX=MPEX.PUB.VESOF

!COMMENT XL's needed for Security/3000 and Streamx
!COMMENT Security/3000 users - SETVAR GUI_XL 'HELLO.PE.VESOF'
!COMMENT Streamx users - SETVAR GUI_XL 'STREAMNL.PUB.VESOF'
!COMMENT If you use Both products,
!COMMENT SETVAR GUI_XL 'STREAMNL.PUB.VESOF,HELLO.PE.VESOF'
!COMMENT The order of the XL's is important!
!SETVAR GUI_XL 'STREAMNL.PUB.VESOF,HELLO.PE.VESOF'
!COMMENT For Security 3000 to function correctly BACKG must be
!COMMENT running with the HELLO traps enabled
!COMMENT To do this, RUN MAIN.PUB.VESOF,SEC to start BACKG
!COMMENT %BACKG STARTJOB
!COMMENT %BACKG START,HELLO
!COMMENT %EXIT
!COMMENT This should enable GUI3000/iX to interface with SEC3000
```

-O-

### Streamx

To enable Streamx, please ensure GUI3KIXJ has the line  
**SETVAR GUI\_XL 'STREAMNL.PUB.VESOF'**

GUI3000/iX obeys Streamx rules, if Streamx has been installed. This will allow you to stream and schedule jobs without embedded passwords.



As yet, we do not support prompting for variables.

See Also

MPEX

-O-

## Security 3000

GUI3000 obeys Security/3000 passwords. If you use the Session password feature of Security/3000, enter your password in the initial log-on screen. This will be checked against the Security/3000 database, and you will not be allowed access if you fail the password check.

If you do not use Security/3000 then you will not see the prompts at all

**To enable Security/3000, please ensure GUI3000/iXJ has the line  
SETVAR GUI\_XL 'HELLO.PE.VESOF'**

XL's needed for Security/3000 and Streamx  
Security/3000 users - SETVAR GUI\_XL 'HELLO.PE.VESOF'  
If you use both STREAMX AND Security/3000 then  
**SETVAR GUI\_XL 'STREAMNL.PUB.VESOF,HELLO.PE.VESOF'**  
***The order of the XL's is important!***

For Security 3000 to function correctly BACKG must be running with the HELLO traps enabled. To do this,  
RUN MAIN.PUB.VESOF,SEC to start BACKG

```
%BACKG STARTJOB  
%BACKG START,HELLO  
%EXIT
```

This should enable GUI3000/iX to interface with SEC3000

For further details on Security/3000 please contact:-

### In the USA and Worldwide excluding Europe

**OmniSolutions, Inc.**  
**phone: 1-800-935-0101 or 818-382-9881**  
**fax: 818-382-9885**  
**tech support: 818-382-9883**  
**e-mail: [omnisolutions@usa.net](mailto:omnisolutions@usa.net)**

### In the UK and Europe

**Gainsborough Software**  
**phone: (44) 121-321-2555**  
**fax: (44) 121-321-3555**  
**e-mail: [peter@gainsborough.com](mailto:peter@gainsborough.com)**

Security/3000 is Copyright of VeSoft inc.

-O-

## MPEX

GUI3000 supports MPEX from Vesoft. MPEX allows a much enhanced MPE/iX command set. GUI3000 does not in this version check MPEX syntax.

To enable MPEX, please ensure that the file equation:-

## **FILE MPEX=MPEX.PUB.VESOF**

is present in the job GUI3KIXJ

For further details on MPEX, contact:

### **In the USA and Worldwide excluding Europe**

**OmniSolutions, Inc.**

**phone: 1-800-935-0101 or 818-382-9881**

**fax: 818-382-9885**

**tech support: 818-382-9883**

**e-mail: [omnisolutions@usa.net](mailto:omnisolutions@usa.net)**

### **In the UK and Europe**

**Gainsborough Software**

**phone: (44) 121-321-2555**

**fax: (44) 121-321-3555**

**e-mail: [pete@gainsborough.com](mailto:pete@gainsborough.com)**

MPEX is Copyright of VeSoft inc.

-O-

## **Programmers Studio**

When sending a file to Programmers Studio, you can choose a connection, or a project file. Simply choose your option, and click on OK to edit the file. Control at this point is handed over completely to Programmers Studio, and you can carry on working elsewhere in GUI3000/iX.

For more details on Programmers Studio, follow the link to Whispertech, or visit their web site, <http://www.whispertech.com>

-O-

## **Qedit from Robelle**

Qedit is the HP3000, HPUX and Windows file editor from Robelle Consulting. To contact Robelle, their web site is:- <http://www.robelle.com>

Or contact them at

Unit 201, 15399-102A Ave.

Surrey, B.C.

CANADA V3R 7K1

Tel: 604.582.1700

Fax: 604.582.1799

E-mail: [info@robelle.com](mailto:info@robelle.com)

-O-

GUI3000/iX will use Adager to change capacities. For this to happen you need Adager on your system. If you require further details, please contact:-

**ADAGER**

180 First Street West,

Sun Valley,

Idaho 83353-3000  
Telephone: +1 (208) 726-9100  
Fax: +1 (208) 726-8191

<http://www.adager.com>  
[info@adager.com](mailto:info@adager.com)

-0-

## Security

# Index

## - U -

User Capabilities

## - S -

Show All Users 18

## - D -

Disc Space Explorer 15

## - T -

Telnet Emulator

## - W -

Welcome to GUI3000/iX 8

## - C -

Console Log Explorer 17  
Console Log Filter

## - T -

Terminal Emulation

## - E -

Export Spool files

## - M -

Managing Devices 17

## - F -

Filtering Spool Files

## **- U -**

User Defined events

## **- F -**

File Explorer 13

## **- E -**

Exporting Databases

## **- F -**

File Types

## **- D -**

Data Item Explorer 20  
Database Explorer 20  
Database Query 20

## **- P -**

PC to HP3000 Transfers

## **- C -**

Change Capacities Database

## **- G -**

Graph Database 21

## **- D -**

Database Retrieve  
Database Results 21

## **- Q -**

Query Matching

## **- P -**

Ping IP Host Name Address

## **- A -**

About

## **- G -**

Get In Touch

## **- O -**

Omnisolutions Distribution Sales

## **- P -**

Printing

## **- S -**

Status Bar

## **- C -**

Connection Problems

## **- D -**

Dial-Up Networking

## **- S -**

Spool File Explorer 14  
System Requirements

## **- T -**

ToolBars 19

## **- C -**

Connection Wizard Add Server

## **- W -**

Windows Commands

## - C -

Clients

## - V -

Version History

## - G -

GUI3000 Password  
Gainsborough Software Distribution Sales

## - P -

Properties

## - W -

Whats new in this version GUIX

## - C -

Command History GUIX

## - G -

GUIEMAIL ZIP  
GUIPDF PDF EMAIL ZIP

## - S -

SqlLink3000 Mirrored Edition

## - C -

Change Logon

## - P -

Paths, Web Pages and Commands

## - R -

Reply From Monitor

## **- D -**

Deployment 11

## **- R -**

Reply

## **- H -**

Host Cursor

How do I find the IP address of my HP3000

## **- G -**

GUI3KIXJ

## **- H -**

HP3000 Programs Supplied

## **- S -**

Starting the HP3000 Server GUIX Command History

## **- M -**

Modify the Server Files

## **- S -**

Server Installation 10

## **- W -**

Whats New in 4.3

## **- K -**

KSAM Retrieval

## **- D -**

Drag And Drop



**- U -**

Uninstall

**- D -**

Data File Explorer 16

**- K -**

Ksam Results

**- U -**

Unix to HP3000 Transfers  
Unix to Unix Transfers

**- C -**

Copy a File

**- U -**

Unix Explorer  
Unix Utilities

**- M -**

MPE/ix Utilities 14

**- E -**

Edit a File

**- I -**

Inter Machine Transfers

**- M -**

Move a Group

**- C -**

Copy a Group

## **- F -**

File Codes

## **- A -**

Ascii File Properties

## **- H -**

HP3000 to Unix Transfers

## **- F -**

File Viewer

## **- V -**

View a File

## **- R -**

Rename a File

## **- B -**

Binary File Properties

## **- G -**

Graph Accounts

## **- U -**

User Details

## **- G -**

Group Properties

## **- A -**

Account Properties  
Accounts Right Click  
Accounts Window Folders

**- S -**

Session Name

**- O -**

Octal Hex Viewer

**- B -**

Build A New File

**- P -**

PC Explorer

**- B -**

Base Mode  
Base Password

**- D -**

Database Name

**- O -**

Open Database

**- V -**

Volume Sets

**- H -**

HP3000 to PC Transfers

**- W -**

Window Menu

**- F -**

File Window

## **- W -**

Whats New

## **- M -**

Managing Job Queues

## **- F -**

Filtering Jobs and Sessions

## **- W -**

Working with Jobs and Sessions 16

## **- S -**

Show Processes Alter Process Altproc

## **- R -**

Right Click

## **- K -**

Keyboard Short Cuts

## **- E -**

External Product Links 22

## **- A -**

Adager 25

## **- F -**

Frequently Asked Questions 21

## **- S -**

Sessions

## **- T -**

Terminal Emulation Reflection Minisoft Running

## - F -

Filtering

## - S -

Security 3000 Problems

## - C -

Charting - Axis Labels  
Charting - Scale Properties  
Charting - Stripe Properties  
Charting - 3D Properties  
Charting - Series Properties  
Charting - General Properties

## - A -

Acknowledgements

## - E -

Error Codes

## - S -

Streaming Jobs

## - Q -

Qedit from Robelle 25

## - E -

Error Handling  
Enabling VESOFTE Products 23

## - P -

Performance

## - S -

Streamx 23

## **- M -**

MPEX 24

## **- S -**

Security 3000 24

## **- G -**

GUI3000/iX - Charting

## **- J -**

Job And Session Limits

## **- F -**

Finding Files

## **- A -**

Ascii Table

## **- F -**

Finding Files by Size

## **- G -**

Graphing Accounts

## **- F -**

Finding Files by Date

## **- S -**

Scheduling a job

## **- F -**

Find Files Using MPEX

## **- P -**

PCIP

## - G -

Graphical Setup 9

## - S -

System Monitors  
Server Right Click

## - M -

Misc Settings

## - T -

Terminals and Editors

## - M -

Managing Multiple Servers 19

## - C -

Charting - Grid Line Properties

## - S -

Servers 12

## - G -

Graphical File Filter

## - D -

Details for account duplication  
Duplicating an Account structure

## - F -

Function by Account

## - W -

Working with the system monitor

## **- H -**

How the system monitor works.

## **- W -**

Working With the Translation Table

## **- F -**

Foreign Language Support 11

## **- P -**

Programmers Studio 25

## **- W -**

WhisperTech

## **- Q -**

Qedit for Windows Configuration







---

© GUI Innovations Limited  
[www.gui-innovations.com](http://www.gui-innovations.com)

---